



Sara Kite
(P-Ohio State)
B.A. human ecology

"I was given so many opportunities to grow as a leader and an individual during college, and I owe it all to my Alpha Phi affiliation. I had several mentors who encouraged me to keep striving for the best, and I can only hope to inspire others to do the same."

As an ELC, I'm looking forward to: meeting Alpha Phi sisters from across the country, and giving back to the organization that has given me so much.

If I wasn't an ELC, I'd: be going to graduate school to receive my master's degree in social work.

Favorite Alpha Phi memory: I have had so many memorable experiences during my years in Alpha Phi that it is impossible to just select one.

No one knows that I secretly: would love to be a country music singer!

Three words that best describe me are: ambitious, loyal and quirky.



Lindsay Martin
(BΨ-San Jose State)
B.S. public relations, minors in communication studies and political science

"My collegiate experience would have been nothing without Alpha Phi. There are so many experiences I never would have tried and so many people I never would have met without the connections I made through my Alpha Phi affiliation. I owe most of my successes in college to my chapter, and my hope, as an ELC, is to show the great opportunities that Alpha Phi has to offer other sisters."

As an ELC, I am looking forward to: meeting and working with a wide variety of Alpha Phi sisters across North America.

If I wasn't an ELC, I'd: be attending graduate school at Texas A&M or Ohio University, getting my master's degree in student affairs.

Favorite Alpha Phi memory: everything my senior semester - especially my last initiation week.

No one knows that I secretly: want to open my own wedding coordination/event planning business.

Three words that best describe me are: down-to-earth, motivated and organized.



Stephanie Rendon
(ΔE-Iowa and EΘ-Northern Iowa)
B.A. American studies

"Alpha Phi and Greek life have been such a big part of my life, it's difficult to explain it to those who haven't experienced it."

As an ELC, I am looking forward to: traveling to meet sisters from all over and helping them get as much out of Alpha Phi as I have.

If I wasn't an ELC, I'd: be moving out to the East Coast to find a job that would make me happy.

Favorite Alpha Phi memory: This is really tough since my whole last year has been incredible. I will never forget living in the house as a fifth-year senior and having the best year of my college career. My sisters gave me a memory a day to put away and take with me wherever I may go.

No one knows that I secretly: am totally obsessed with hockey. During hockey season I can easily be found in front of a television watching the game of the night.

Three words to describe me are: bubbly, motivated and devoted.



Stefania Rudd
(ΘP-Cameron)
B.A. communications

"I have put my heart and soul into Alpha Phi since the day I joined. I know that Alpha Phi has enriched my life for the better and allowed me experiences and opportunities that many women do not normally get to have. I believe what you put into something is what you will get out of it. We all have the power to make Alpha Phi the best it can possibly be."

As an ELC, I'm looking forward to: the opportunity to meet new and diverse sisters.

If I wasn't an ELC, I'd: be attending graduate school and earning a degree in higher education administration.

Favorite Alpha Phi memory: becoming president of my chapter and getting to wear the same badge my older sister Kathy did, formal recruitment 2001 and the crazy-but-fun times spent with the sisters of the Gamma Omega chapter.

No one knows that I secretly: would love to be a "Saturday Night Live" cast member.

Three words that best describe me are: outgoing, loyal and genuine.



Eileen Victoriano
(ΓN-Miami University)
B.S. management information systems and B.S. accounting

"Alpha Phi gave me my best friends and helped me find my true self."

As an ELC, I'm looking forward to: meeting my sisters and traveling North America to Alpha Phi chapters.

If I wasn't an ELC, I'd: be working as an intern for a professional baseball team.

Favorite Alpha Phi memory: Alpha Phi formal 2000.

No one knows that I secretly: am a very, very bad swimmer.

Three words that best describe me are: sincere, hard-working and smart.

*Dear 2001-2002
Educational Leadership Consultants*

Thank you for your dedication, professionalism, enthusiasm and love for Alpha Phi. Over the past few months you have touched the lives of collegians and alumnae across North America. Because of you, our Fraternity is a better place. Because of your efforts and achievements, we will expect more from future consultants. Because of your experiences, you are prepared to make your mark in your next professional endeavor.

coe, The Collegiate Membership Department



ANNOUNCEMENTS



Adrian (ΔH)

To Edward and Kendall White Doman, a son, Clarkston Edward, March 1, 2001.

To Mukul and Lisa Frazzini Verma, a daughter, Maya Lillian, Aug. 10, 2001.

To Matthew and Angel Williams Calnin, a daughter, Olivia Julie Ann, Nov. 27, 2001.

Appalachian State (ΘN)

To John and Catherine Megrath Myers, a daughter, Corinna Caroline, Nov. 7, 2001.

Arizona (BE)

To Richard and Laurie Florkiewicz, a son, Luke Richard, April 20, 2001.

To Jim and Lora Robinson Robinson, a daughter, Kate Collett, Nov. 4, 2001.

Arizona State (ΓΠ)

To Jason and Holly Condon Hansen, a son, Seth Patrick, Nov. 27, 2001.

To Robert and Liliانا Acosta Stowe, a son, Hunter Michael, Jan. 19, 2002.

Ashland (EA)

To C.J. and Meagan Gahan Smith, a son, Ryan Andrew, July 23, 2001.

To Andy and Melinda Hoffman Tobolewski, a daughter, Alaine Nicole, Aug. 4, 2001.

Baldwin Wallace (ΔΥ)

To Chris and Erin Thomas Haberman, a daughter, Amelia Christine "Mia," March 29, 2002.

Ball State (ΔP)

To Jim and Kristin Toussaint Inskip, a son, Connor Boyd, Dec. 12, 2001.

To Paul and Molly Circle Sawyer, a son, Jackson Paul, Feb. 20, 2002.

Bentley (ZP)

To Keith Robert and Elizabeth Daly Evans, a daughter, Amanda Helene, Nov. 16, 2001.

To Roy and Tina Azizian Whitaker, a son, Herbert LeRoy "Royce," Dec. 26, 2001.

Bryant (ΘB)

To Walter and Leslie Wallace Cook, a son, Walter Frederick, Feb. 28, 2002.

Butler (EB)

To Darrin and Julie Vilt Hutchings, a son, Jacob James, Dec. 3, 2001.

To Darren and Theresa Okimoto Wells, a son, Brennan Steven, Feb. 13, 2002.

Cal Poly (EX)

To Richard and Julie Hemingway McMullin, a daughter, Torri Anne, Nov. 17, 2001.

To Chad and Cass Montgomery Hawkins, a son, Blake Montgomery, Dec. 21, 2001.

Christopher Newport (ΘΦ)

To Aaron and Sherri Szwedek Smith, a son, Hunter Riley, April 2, 2002.

Colorado State (ZM)

To Craig McGlashan and Carmen Bryant, a son, Blake Donald, Jan. 17, 2002.

Cornell (Δ)

To David and Renée Hunter Toth, a son, Brayden Alexander, Nov. 10, 2001.

Creighton (ΘΔ)

To Sven and Nicole Ward Mayer, a son, Ethan Sakai, June 13, 2001.

CSU/Hayward (HA)

To Tim Kelly and Kymberly Heisey, a son, Grant Xavier, Feb. 22, 2002.

CSU/Long Beach (ΓK)

To Sven and Alyssa Jackson Igawa, a son, Mason Grey, Jan. 25, 2002.

CSU/Northridge (EY)

To Bryan and Juli Bellante Maloney, a son, Garrett James, June 18, 2001.

CSU/Sacramento (EF)

To Raymond and Linda Hubbard Kay, a son, Sam, April 10, 2001.

To Kevin and Jennifer Burkart Trapani, twins, Mallory McQuillan and Anthony Leopold, July 18, 2001.

To Jason and Sasha Wright Macktinger, a son, Caiden Noah, Dec. 19, 2001.

To Richard and Myra Glenn Makelim, a daughter, Hannah Renee, March 5, 2002.

CSU/San Bernardino (HB)

To Keith and Juliana Thomas Kutsche, a son, Jacob Cullen, Oct. 19, 2001.

Dayton (ZΨ)

To Steve and Abigail Aquilla Barnes, a son, Ethan Alexander, Jan. 14, 2002.

To Craig and Leslie James Vaughn, a daughter, Hailey Suzanne, Feb. 8, 2002.

Delaware (EN)

To John and Elizabeth Gropp Moore, a daughter, Beatrix Rose, April 17, 2001.

DePauw (Γ)

To Jerry and Alison Kelly Frantzen, a son, Joseph Sheridan, Sept. 22, 2001.

Drake (ΓO)

To Andy and Sonja Ritchie Roy, a son, Noah Andrew, Nov. 28, 2001.

Duke (BN^)

To Michael F. II and Anna Brant Kay, a son, Asher Jaden, Oct. 19, 2001.

Duquesne (EI)

To Rick and Renee Weber McGinn, a daughter, Elizabeth Marie, Dec. 4, 2001.

East Carolina (ΔA)

To Loftin and Shelley Barron Herring, a daughter, Ashlyn Margaret, Feb. 25, 2002.

Eastern Illinois (ZA)

To James and Nicole Patton Gibson, a son, Wesley James, Nov. 8, 2001.

To Leon and Ellie Huber Dowling, a son, Campbell David, Nov. 20, 2001.

To Larry and Wendy Taylor Courtney, a daughter, Kellie Ann, Feb. 7, 2002.

Elmhurst (ZE)

To Daniel and Lisa Dornier Murphy, a son, Ryan Patrick, Oct. 21, 2001.

Florida Tech (ΘZ)

To Josh and Angela Noutsis Palladino, a son, Raffaele, Aug. 3, 2001.

To Lamar and Michelle Gray-Holloway, a son, Mikel Lamar, Nov. 6, 2001.

To Curt and Danielle O'Driscoll Fischer, a daughter, Caroline Margareta, Jan. 3, 2002.

To Michael and Kendall Croft Meddows, a son, Jackson Crew, Jan. 8, 2002.

To Mike and Dawn Martel Signiski, a son, Ryan George, Feb. 5, 2002.

To Joseph Addison IV and Janice Kopec Hagan, a son, Joseph Addison V, April 6, 2002.

Idaho (BZ)

To Jacob and Tonia Ulrich McClure, a son, Ian Jacob, April 3, 2002.

Illinois (BA)

To Geoff and Brenda Freeman Brieden, a daughter, Anna Therese, Jan. 29, 2002.

To Mike and Hillary Mead Malsch, a son, Michael Charles Jr., Feb. 11, 2002.

Illinois State (ZT)

To Corey and Cheryl Pold Oltman, a daughter, Colby Leah, June 27, 2001.

To Steve and Karin McCarthy-Lange, a son, Maverick James, July 4, 2001.

Indiana (BT)

To Erik and Christina Hill Fox, a daughter, Lauren Marie, Feb. 26, 2002.

Indiana U. Southeast (ZE)

To Dwight Mielke and Rebecca Lynne Carlton, a son, Devin Christopher Lee, April 10, 2001.

Indiana U. of Pennsylvania (ΔΦ)

To Barry and Alison Menner Flesik, a daughter, Mallory Lee, April 12, 2001.

Iowa (ΔE)

To Bret and Alisa Bradley Smith, a daughter, Avery Jordan, Dec. 12, 2001.

Iowa State (ZΔ)

To Patrick F. and Alice Uchytill Lowery, a son, Patrick Mills, Dec. 20, 2001.

To Carlos and Melissa Rossman Galdamez, a son, Diego James, Dec. 27, 2001.

James Madison (ΘI)

To Samuel and Charis Graeser Uzabel, a son, Luke Anthony, Oct. 22, 2001.

Kent State (BΩ)

To Brian and Jana Jones Weinreich, a daughter, Macy Lee, March 29, 2001.

To Patrick and Chase Ruppert Brady, a daughter, Harlan Spencer, Oct. 22, 2001.

To Lawrence and Danielle Jagers Sprockett, a son, Alexander Lawrence, Dec. 6, 2001.

To Brad and Barbara Tamer Toman, a daughter, Brooke Elizabeth, Feb. 3, 2002.

Loyola Marymount (ZB)

To Brian and Michelle Gunst Norman, a daughter, Nicole Lee, June 16, 2001.

To Ciro and Annette Galosic Di Scala, a daughter, Lauren Michelle, Oct. 28, 2001.

To Greg and Marlo Gottfurcht Longstreet, a son, Tanner Jay, Nov. 25, 2001.

Maine (ΔN)

To Troy and Carrie Drought Ellsmore, a son, Brian James, July 30, 2001.

Marquette (HM)

To David and Melissa Schafernak Laurenson, a daughter, Hailey Anne, Jan. 9, 2002.

Maryland (ΔZ)

To Timothy and Maria Radelat Rauch, a daughter, Ava Louise, Dec. 19, 2001.

To Dan and Beth Halpern Bernstein, a daughter, Zoe Helen, March 17, 2002.

McMaster (ΘO)

To Trevor and Jennifer McCulloch Patrick, a son, Dylan David Timothy, Nov. 21, 2001.

Miami University (ΓN)

To Bill and Christine Bennett LeFever, a son, Matthew Bennett, Aug. 14, 2001.

To Matt and Cheryl Laws Roeder, a son, Austin James, Oct. 12, 2001.

To Matt and Cindy Cox Post, twins, Jonathan and Meredith, Dec. 5, 2001.

Michigan (Θ)

To Justin and Anne Boutrous Snyder, a daughter, Makayla Mary, July 27, 2001.

To Sundhar and Kala Karu Ramasamy, a daughter, Selvi Kiran, Aug. 29, 2001.

To Nenad and Sandy Postell Stojkovski, a son, Alexander Tyler, Dec. 17, 2001.

To Robert and Melissa Wilkinson Ronk, a daughter, Emma Elizabeth Maudy, Feb. 13, 2002.

Michigan State (BB)

To Jordan and Bliss Carney Darragh, a son, Caden Spencer, Oct. 6, 2001.

Minnesota (E)

To Mark and Kim Berthe Suppes, a daughter, Ellie Anna, Dec. 1, 2001.

To Mark and Valerie Meyer Halvorson, a daughter, Rachel Lynn, Dec. 23, 2001.

Missouri (O)

To Jeff and Heidi Nelson Colench, a son, Benjamin Jeffrey, June 7, 2001.

To Eric and Lisa O'Renick-Zimmerman, a son, Alex Michael, Sept. 4, 2001.

To Timothy and Julie Phillips Meyer, a son, Eric Michael, Oct. 22, 2001.

To Brian and Kristen Hippard Schraut, a son, Benjamin William, Nov. 25, 2001.

Montana (X)

To Rick and Kimberly Hurley Bergesen, a daughter, Analise Christine, July 6, 2001.

NC State (EΦΛ)

To Greg and Tonya Maroschak Fink, a son, Caleb Jeremiah, Oct. 20, 2001.

Nebraska (N)

To John and Michelle "Shell" Cooper Day, a son, Benjamin Cooper, Sept. 10, 2001.

North Dakota (Γ)

To Anthony and Courtney McDonald Koebele, a son, Charles Anthony, July 1, 2001.

Northern Illinois (EΔ)

To Larry and Pamela Miars Rosenberg, a son, Eamonn John, May 18, 2001.

To William and Dawn Harming Skarzynski, a son, Evan William, Dec. 1, 2001.

Northwestern (B)

To Mark and Kimbra DeFeo Walter, a daughter, Samantha Kate, Oct. 16, 2001.

Oklahoma (Φ)

To Rich and Christy Chaffin Holden, a daughter, Julia Cathryn, Nov. 7, 2001.

Oklahoma City (ΔΔ)

To Russell and Heidi Jo Smith Towle, a daughter, Stephanie Marie, Sept. 10, 2001.

Old Dominion (EH)

To Tony and Shannon MacNamee Whitlock, a daughter, Abigail Taylor, Nov. 12, 2001.

To Jeffrey and Sarah Deel Weygant, a son, Hunter Reece, Jan. 10, 2002.

Oregon State (BY)

To Jeffrey A. and Heather Masaitis Girod, a daughter, Ellison Anne, Jan. 8, 2002.

To Randy and Robyn Whitehouse Scott, a daughter, Avery Cate, March 30, 2002.

Penn State (ΓP)

To David and Colleen Brooks Evans, a daughter, Kelly Katherine, Aug. 2, 2001.

Purdue (ΔM)

To John G. and Tiffani Hunt Knowles, a daughter, Isabelle Joy, Dec. 30, 2001.

Richmond (HN)

To Rob and Amy Smithwick Boyle, twin sons, Graham Patrick and Matthew Branch, Dec. 28, 2001.

San Diego State (ΓA)

To Mike and Anne Thaller Critchfield, a son, Victor Michael, Oct. 21, 2001.

San Jose State (BΨ)

To David and Lauren Purkey Wood, a daughter, Meghan Elizabeth, Dec. 11, 2001.

To Michael and Shelly Henry Demko, a daughter, Natalia Sophia, March 28, 2002.

Seton Hall (HH)

To Ed and Camille Petrizzo Mercado, a son, Andrew James, July 23, 2001.

To Christopher and Adriana Procaccio Komst, a daughter, Giovanna Grace, Jan. 9, 2002.

South Dakota (Ψ)

To Scott and Ann Jacobson Hakes, a daughter, Reagan Sophia, March 12, 2001.

NuCleavers



Simply the Best

*"the most unbelievable cleaver
that I have ever seen
in my life"*

- One piece stainless steel
- Custom made in Hong Kong
- Weighted and balanced for precision cutting
- Extra sharp edge

Approx. 15 Oz, 11³/₄" x 3³/₈"

Price \$19.50 + \$4.50 Shipping & Handling

Send orders to:

NuCleavers, 1640 LaPorte Dr.,

Roseville, California 95747

888 872-2493 NuCleavers@surewest.net

Southern Illinois (EΞ)

To P.J. and Beth Scherrills Welsh, a son, Trevor James, Oct. 15, 2001.

SUNY/Cortland (HT)

To John P. and Nicole Garnett O'Connor, a daughter, Shannon Elizabeth, Nov. 7, 2001.

Texas Tech (ΓI)

To Greg and Kim Bennett Landry, a daughter, Katherine Ann, June 29, 2001.

To Scott and Krista Castleberry Wiehle, a daughter, Kennedy Grace, Feb. 5, 2002 (also Φ-Oklahoma).

Toronto (Ξ)

To Edward G. and Jana Chu Wong, a daughter, Elizabeth May, Jan. 3, 2002.

Towson (HΩ)

To Andrew and Tracey Segal Nachamie, a son, Matthew Hunter, July 30, 2001.

Truman State (ΘΓ)

To Stephen and Sherri Strubel Schultz, a son, Samuel Esselman, Aug. 18, 2001.

UC/Berkeley (Λ)

To Dan and Melissa Arlen Brady, a son, Liam Campbell, Jan. 9, 2002.

UC/Davis (EP)

To Greg and Kim Bennett Landry, a daughter, Katherine Ann, June 29, 2001.

UCLA (BΔ)

To Jamie and Cherie Hovelsen Johnson, a daughter, Leah Marie, Feb. 5, 2001.

UC/Santa Barbara (ΓB)

To Larry and Cathy Knobbe Pederson, a daughter, Sara Jeanette, June 24, 2001.

USC (BN)

To Andy and Kim Tyacke Zweber, a daughter, Alyssa Nicole, July 27, 2001.



To Shannon and Moira Messenger Bane, a son, Connor Joseph, Aug. 11, 2001.

To Michael and Julie Conkin Sportelli, a son, Michael Fisher, Feb. 16, 2002.

Villanova (HE)

To Andrew and Mary Thomassen Kruh, a daughter, Erin Patricia, March 5, 2002.

Virginia Tech (HO)

To Glen and Heather Hollywood Klesat, a son, Nicholas Glen, Jan. 20, 2002.

Washburn (Y)

To Andrew Piper and Laura Gormanson, a daughter, Haley Ann, Aug. 25, 2001.

To Rick and Shelley Bauman Smith, a daughter, Ainsley Renee, Dec. 17, 2001.

Washington (Σ)

To Derek and Lynn Lucking Sitzmann, a daughter, Sarah Élise, July 26, 2001.

Washington State (BPA)

To Denny and Abbie Seehafer Naumec, a daughter, Sydney Alexandra, Oct. 24, 2001.

Washington University (ZY)

To Andy and Laura Matyear Florence, a son, Connor Michael, Oct. 28, 2001.

To Boyd Troop and Anne-Lise Hultsch, a son, Spence Walker, Jan. 8, 2002.

West Chester (EK)

To T. Benjamin and Sarah Soldon-Marsho, a daughter, Emma Leigh, June 20, 2001.

To Sean and Laura Klinzing Kelleher, a son, Sean Patrick, July 26, 2001.

Wisconsin (I)

To Michael and Margaret Huber Hackworthy, a daughter, Annmarie Elizabeth, Dec. 31, 2001.

Wisconsin/LaCrosse (ΔK)

To Matt and Dana Prusko Schumacher, a son, Tyler Frederick, Feb. 1, 2002.

Marriages

Adrian (ΔH)

Jill Geddes to James Curry, July 7, 2001.

Heather Naughten to Les Crosby, Aug. 11, 2001.

Jenny Dobrovec to Matt Zavadi, Oct. 13, 2001.

Tara Richason to Joshua Fisher, Dec. 1, 2001.

Jodi Brothers to John Forester, Jan. 19, 2002.

Akron (HF)

Dawn Robinson to Ronald Joy, Jun 23, 2001.

Arizona (BE)

Jamee Backus to Chris Emens, Dec. 28, 2001.

Laurie Arthur to Timothy Boquist, March 2, 2002.

Ashland (EA)

Heidi Marshall to Jarrod Long, Sept. 15, 2001.

Kim Andes to Kent Parrill, Dec. 16, 2001.

Erin Johnson to Ross Shaw, June 29, 2002.

Ball State (ΔP)

Laura Kostopoulos to Andrew Jordan, July 14, 2001.

Bentley (ZP)

Tiffany Miller to Christopher Hurlbut, Aug. 25, 2001.

Deirdre Korman to Tom Andrews, Sept. 22, 2001.

Bowling Green State (BO)

Michele Dowling to Christopher Bockwich, Nov. 3, 2001.

Cal Poly (EX)

Julie McDonnell to David Lesser, Sept. 29, 2001.

Cameron (ΘP)

Jillian McCall to Wes Bradshaw, April 6, 2002.

Case Western Reserve (ZΠ)

June Lee to Matthew Whittaker, May 11, 2002.

Colorado State (ZM)

BrandiWynne Smith to Gregory Hunt, Feb. 24, 2002.

Cornell (Δ)

J. Allison Hertel to David Bignault, Dec. 15, 2001.

Creighton (ΘΔ)

Bernadette Goettl to Mathew Roché, June 15, 2002.

CSU/Chico (ΘV)

Courtney Sullivan to John Hasselbach, Jan. 19, 2002.

CSU/Hayward (HD)

Erin Graffius to Mynor Arana, Feb. 2, 2002.

CSU/San Bernardino (HB)

Michelle Flood to William Kelley, April 20, 2002.

Dayton (ZΨ)

Kelly Hannon to Michael Gleason, June 30, 2001.

Kathleen Crowley to Jon Falk, Sept. 8, 2001.

Drake (ΓO)

Rachel Roman to Eric M. Speh, Sept. 1, 2001.

Jessica Nieman to Luke Warner, Sept. 22, 2001.

Bethany Hornblad to James Wright, Dec. 29, 2001.

Stephanie Barrett to Thomas Fanthorpe, Feb. 2, 2002.

Duke (BN^A)

Debbie Glisson to E. Jeffrey Messner, July 21, 2001.

Duquesne (EI)

Laura Slipski to John Backus, March 9, 2001.

East Carolina (ΔA)

Laurin Leonard to Barrett Jarman, March 2, 2002.

Amber Haire to Jason Smith, April 27, 2002.

Eastern Washington (HΨ)

Andrea Morris to Paul Weymiller, Feb. 23, 2002.

Evansville (EN)

Robin Vaughn to Seann Miller, Nov. 28, 2001.

Florida Tech (ΘZ)

Michelle Gray to Lamar Holloway, July 16, 2001.

George Mason (HA)

Michele Boyer to Rinaldi Rampen, March 23, 2002.

Melinda Mosocco to Sean Shingler, April 13, 2002.

Idaho (BZ)

Mandalyn Vanhoozer to Don Hulsizer, Sept. 1, 2001.

Joy Gordon to Jayson Ulrich, June 15, 2002.

Illinois (BA)

Kathy Burns to Dennis Hasenfang, Dec. 15, 2001.

Leslie O'Donnell to Jake Tiongco, May 26, 2001.

Emaley Zuback to Jack Losic, May 27, 2001.

Julie Rymysza to Ryan Gribbens, Aug. 4, 2001.

Colleen Rump to Frank Henningfeld, March 16, 2002.

Indiana (BT)

Kelly Thompson to Daniel Witte, Dec. 8, 2001.

Adrienne Weir to Samuel David Hodson, Feb. 10, 2002.

Iowa (ΔE)

Kathy Ross Augspurger to Kevin Simard, Sept. 14, 2001.

Iowa State (ZΔ)

Tracy Bucher to Lucas Jones, May 13, 2001.

James Madison (ΘI)

Kelly McCarthy to Jamie Singleton, Oct. 6, 2001.

Johns Hopkins (ZO^A)

Sally Anne Schmidt to Tom Gutting, July 21, 2001.

Anna Hoffman to Robert W. Harrison, June 22, 2002.

Kent State (BΩ)

Jennifer Hammer to Andrew DiGeronimo, Aug. 11, 2001.

Amanda Mock to Josiah Sell, Sept. 15, 2001.

Lafayette (HΣ)

Erin Mellay to Shaun B. Gannon, Oct. 20, 2001.

Linfield (ΘA)

Michelle Jones to Kevin Davis, June 14, 2002.

Miami University (ΓN)

Katherine Wojcicki to Darren Shade, Aug. 25, 2001.

Carolyn Scheidler to Craig Black, Sept. 29, 2001.

Michigan (Θ)

Carrie Roeser to Jason Hamilton, June 23, 2001.

Amy Tobe to Charles Bambenek, Dec. 15, 2001.

Michigan State (BB)

Meg Wilson to Thompson Godfrey, Feb. 23, 2001.

Kim Woodrow to Todd Mrozinski, June 30, 2001.

Karyn Patterson to Erik Bloch, Sept. 15, 2001.

Jennifer Horton to Nathan Bufalini, Dec. 28, 2001.

Midwestern State (ΓΩ)

Dawn Mays to David Newton, Nov. 17, 2001.

Missouri (O)

Amy Friederich to Seth Schuchman, June 9, 2001.

MIT (ZΦ)

Colleen Schwingel to Steven Bohn, Dec. 22, 2001.

Northern Colorado (ΔΓ)

Michael Megan Graham to Robert William Lambert, June 22, 2002.

Northern Illinois (EA)

Jennifer Hutchinson to Steven Frobish, April 20, 2002.

Northern Iowa (EO)

Jennifer Folsom to Bill May, June 15, 2002.

North Texas (ΓH)

Rhonda Lopez to Will Abraham, Sept. 30, 2001.

Northwestern (B)

Allison Sieg to Brian Meier, Aug. 4, 2001.

Ohio State (P)

Kathryn Dunlavy to Bryan Hizey, April 7, 2001.

Oklahoma City (ΔΔ)

Gretchen Fryer to Chad Hamel, April 27, 2002.

Old Dominion (EH)

Kathryn "Katy" Williams to Heath Andes, Sept. 29, 2001.

Oregon (T)

Laura Gilpin to Erik Olson, Nov. 24, 2001.

Penn State (ΓP)

Susan Korb to Ira Bernstein, Aug. 19, 2001.

Erika Wagner to Paul Walker-Bright, Nov. 17, 2001.

Purdue (ΔM)

Brighid Mulkey to Paul Kappel, Sept. 8, 2001.

Rensselaer (ΘT)

Joanna Hughes to John Berube, Oct. 20, 2001.

Richmond (HΠ)

Dr. Elva Angelique Van Devender to Dr. Tye Dodge, April 21, 2001.

San Diego State (ΓA)

Valerie Mann to Larry Gelb, June 24, 2001.

Tami Smith to Rob Vail, April 13, 2002.

San Francisco State (HO)

Michaelann Leary to Stephen Boyle, April 21, 2001.

San Jose State (BΨ)

Kathryn Cable to Jason Scavone, July 29, 2001.

Seton Hall (HH)

Melissa Naddeo to Mark Nazzaro, July 21, 2001.

Joanna Pennell to Anthony Violante, Oct. 21, 2001.

St. Mary's (IB)

Melanie Ann Perez to Felipe Ytuarte, Jan. 5, 2002.

SUNY/Plattsburgh (ΘΨ)

Jill Bates to Michael Reynolds, April 28, 2001.

Jennifer Mousseau to Marc Duffy, July 14, 2001.

Texas (Ω)

Elena Slightom to Parrish Dean Ticer, July 27, 2001.

Texas A&M/Commerce (ΔB)

Debra Janes to David Lovett, April 1, 2002.

Kim Ridling to Matt Pearson, April 6, 2002.

Texas Tech (ΓI)

Rachel Hagood to Michael Magee, May 5, 2001.

Whitney Kimbley to Jason Gandy, Aug. 11, 2001.

Towson (HQ)
Erin Smith to Corey McGinty, Dec. 29, 2001.

Truman State (OT)
Colleen Field to Jason Chappell, Nov. 10, 2001.

UC/Davis (EP)
Andrea Medina to Daniel Himmelberger, Sept. 22, 2001.

UC/Irvine (HK)
Abbey Herman to Jason Meshekow, Oct. 27, 2001.

UC/Santa Barbara (GB)
Robyne Sherman to Jeffrey Shipley, Nov. 10, 2001.

UCLA (BA)
Bonnie Lemon to Rod Rozanski, July 14, 2001.

Sheryl Axline to Eric Ball, Aug. 18, 2001.

Karin Freeman to Addison Adams, Nov. 17, 2001.

University of the Pacific (IF)
Jessica Lane to Steve Eastham, June 8, 2002.

Washington (Σ)
Donna Daggett to Adam Bowler, July 20, 2001.

Washington State (BP^A)
Rosemary Griswold to Kelly Smith, Sept. 7, 2001.

Rebecca Andrew to Jeffrey Zanatta, April 13, 2002.

Western Michigan (ΔΘ)
Mitzi Wriska to David Golden, Oct. 6, 2001.

Wichita State (ΓΞ)
Amanda Faye Harris to Christopher Kyle Eden, Oct. 10, 2001.

William Woods (ΔX)
Katherine Marie Russell to Joseph Darrell Case, March 23, 2001.

Wisconsin (I)
Sara Levy to Jacob Vogelhut, May 26, 2002.

Silent Chapter

Arizona (BE)
Elizabeth Redewill Nance ('28), Feb. 17, 2002.

Boston (H)
Marion L. Young Frank ('44), March 23, 2002.

Colorado (BF)
Eleanor Freeman Hutchinson ('31), Feb. 3, 2002.

Denison (BK)
Edythe Hulet Carleton ('30), Jan. 14, 2002.

DePauw (Γ)
Diane Krohn Dowell ('49), Dec. 21, 2001.

Idaho (BZ)
Virginia Anderson Stuibler ('39), Oct. 31, 2001.

Indiana (BT)
Janice Rippetoe Motsinger ('48), July 28, 2001.

Ruth Luddy Cox ('62), Jan. 16, 2002.

Kent State (BΩ)
Mable Davey Toth ('48), Jan. 12, 2002.

Michigan (Θ)
Elizabeth Lyon Corwin ('36), March 1, 2002.

Michigan State (BB)
Sally O'Connor Reynolds ('43), Dec. 25, 2001.

Minnesota (E)
Mary Ann French Clifford ('40), Dec. 10, 2001.

Marna Maland MacPhail ('33), Jan. 18, 2002.
Dorothy White Hanscom ('24), Feb. 8, 2002.

Montana (X)
Dorothy Jane "D.J." Cooney Lynch ('36), Jan. 26, 2002.

North Dakota (Π)
Helen McHose Seelye ('32), Jan. 21, 2002.

Northwestern (B)
Patricia Alsop Kelly Fawcett ('35), June 9, 2001.

Barbara Bickel Walvoord ('59), Dec. 16, 2001.

Ohio State (P)
Nancy Rehberg Kling ('58), Feb. 4, 2002.

Mary Susan Farrell Geiger ('75), Feb. 13, 2002.

Puget Sound (ΓZ)
Vera Crail Gilbert ('53), April 9, 2001.

San Diego State (ΓA)
Elizabeth "Kay" Ketchen Moore ('50), Jan. 29, 2002.

San Jose State (BΨ)
Kathy Cable ('00), Jan. 22, 2002.

Santa Clara (ZΓ)
Sonya Chartrand ('94), Nov. 3, 2001.

Syracuse (A)
Lucy Price Springer ('43), May 5, 2001.

Texas (Ω)
Ruth Bownds Kershner ('32), Nov. 20, 2001.

Elizabeth Keeney Alexander ('36), Feb. 7, 2002.

UC/Berkeley (A)
Mary Louise Harelson Imrie ('39), Oct. 22, 2001.

Suzanne Garrette Clark ('57), Dec. 10, 2001.

Eivor Holst Callahan ('36), March 8, 2002.

UCLA (BA)
Barbara Donnell Craig ('36), Dec. 11, 2001.

Washburn (Y)
Martha Kendall Lee ('41), Jan. 31, 2002.

Washington (Σ)
Helen "Nell" Clemens Scott ('40), Oct. 11, 2001.

Bettina Roberts Kettenring ('32), Nov. 17, 2001.

West Virginia (BI)
Margaret Hannah Gluck ('40), Feb. 18, 2002.

If you would like a record of a birth, adoption, marriage or death included in the *Quarterly*, please clip out and submit this form to Alpha Phi *Quarterly*, 1930 Sherman Avenue, Evanston, IL 60201. Or you may e-mail the information to quarterly@alphaphi.org. Please be sure to include all the requested information.

PLEASE NOTE:
Announcements may only be printed if they have occurred within a year of publication. Announcements with missing information, such as specific date, will not be printed. If announcements are received after the copy deadline (see inside front cover for specific dates), they will be considered for the following issue.

New Arrival/Marriage/Silent Chapter Form

Birth/Adoption

FATHER'S NAME FIRST LAST

MOTHER'S NAME FIRST MAIDEN LAST

MOTHER'S COLLEGIATE CHAPTER SCHOOL

CHILD'S NAME FIRST MIDDLE BOY GIRL

CHILD'S DATE OF BIRTH YEAR

Marriage

HUSBAND'S NAME FIRST LAST

WIFE'S NAME FIRST MAIDEN LAST

WIFE'S COLLEGIATE CHAPTER SCHOOL

WEDDING DATE YEAR

Death

NAME OF DECEASED FIRST MAIDEN LAST

COLLEGIATE CHAPTER SCHOOL

DATE OF DEATH YEAR

Submitted by

NAME FIRST MAIDEN LAST

STREET ADDRESS INCLUDING APARTMENT NUMBER

CITY STATE ZIP CODE

IF THE QUARTERLY STAFF HAS QUESTIONS, I CAN BE REACHED AT:

HOME TELEPHONE BUSINESS TELEPHONE

E-MAIL



This form also is available on our Web site at www.alphaphi.org

Coming Full Circle

After Seven Years of Service, Nancy Craig Returns to her College Town



The 2000-02 Foundation Board of Directors honored Nancy Owen Craig (BX-Bucknell), back right, and Michelle Marchant (A-UC/Berkeley), front right, during the spring Board meeting at the Executive Office. Nancy retired as Foundation executive director in May. Michelle completed her term as Foundation Board secretary in June.

Editor's Note: Foundation Manager of Public Relations Emily Ellison (ΓI-Texas Tech) sat down with outgoing Foundation Executive Director Nancy Owen Craig (BX-Bucknell) prior to her departure. The interview follows.

The Florida sun beats down as she walks across the golf course in 3-inch heels. Beads of sweat form. She wonders for the 100th time why she didn't bring just one pair of sneakers.

"It was 1996 – my first Convention as Foundation executive director. I didn't want to dress wrong and embarrass the Board, so I took 18 pairs of high heels and three suitcases filled with every possible outfit," says **Nancy Owen Craig** (BX-Bucknell).

Seven years, three Conventions and 100-plus shoes later, Nancy retired from the Alpha Phi Foundation executive director position at the end of May.

Why to Pennsylvania?

My husband is a visiting professor at Bucknell, my alma mater. I've heard that alumni often retire to their old school town, but I never thought I'd be one of them. I'll miss Chicago – the fantastic restaurants and art galleries. Lewisburg has one main street. But I love the Pennsylvania hills. And I'll be closer (but not TOO close) to our children.

So what will you do?

Not play golf or travel. Some consulting work for the Foundation. Maybe a new career? I've never run a restaurant or been in retail ...

I thought you were retiring?

But my life's been so interesting because I've been able to try all sorts of things. Why not more?

Is that how you came to the Foundation – trying something different?

I was a development professional at a private school in Syracuse, N.Y. My husband's job took him to Chicago, and I went along happily, giving up my career. I'd never visited Chicago and thought it a little Western town, with cows from the stockyards running down the streets. Surprise! It's a sophisticated and yet friendly city. The only cows I've seen are the art pieces on the sidewalks two years ago.

And the Foundation?

Another surprise. I never thought that an Alpha Phi life might exist for me at my age. I answered a blind ad in a professional journal for this job. It said, 'WANTED: Fund Raiser for Evanston Women's Group.' I remember thinking, 'Must be Alpha Phi. I'd better put my membership on my resume.'

The rest is history?

When I came here, a wonderful program was already in place. Volunteers and staff worked for years to put the right foundation in place for the Foundation!

"During the 1996 Convention we celebrated the Foundation's birthday with a 1950s theme party. I wrote special songs, but I couldn't find anyone to play the piano. Nancy stepped up to play beautifully. She is talented in many areas! And she has a lot of shoes."

—Sheila George Bright (ΓI-Texas Tech), former South Central Region Foundation Liaison and former Foundation Director

"The Foundation has done much more than 'keep up with the times.' We are a leader in the Greek world and in philanthropy – much to the credit of Nancy's leadership and ability to take risks."

—Kathleen Feeney Hiemstra (ΔΘ-Western Michigan), Foundation Vice Chairman

"I believe the Foundation will continue to grow and change for the better because Nancy has established an effective and talented staff. The Board of Directors and staff are ready and able to continue the good works of the Foundation."

—Barbara Thomas (ΓΙ-Texas Tech), former Foundation Director and former IEB Vice President

It was time to soar. And we did. Board members led the way with extremely generous gifts. Their enthusiasm rubbed off onto other Alpha Phis. Collegiate and alumnae chapter gifts now total almost \$300,000 – an amount that makes any Greek group proud.

Then everything went perfectly during your time as ED?

Sure ... and I have a bridge I'd like you to buy. The worst disaster was our award-winning Halloween appeal to new donors. Everyone remembers this clever cat solicitation – even university development offices sought samples. But no one ever asked how much money was raised with it. I'll just say that not even one percent of our members replied. Everyone thought it was cute, but no one sent it back!

Anything you regret?

That we never got our philanthropy course for women off the ground.

What are you happiest with?

The *Power of 100* growth – eight times as many women gave \$1,000 or more last year as in 1995.

"Nancy has a habit of calling everything 'that thing.' She referenced 'that thing' in staff meetings. She yelled when she couldn't find 'that thing.' She asked me to work on 'that thing.' One day I knew what 'that thing' was without asking. That's when I truly became a part of the Foundation staff."

—Brooke Loucks (ΖΨ-Dayton), former Foundation and Fraternity staff member



(From left) Susan Brink Sherratt (BB-Michigan State), Nancy Owen Craig (BX-Bucknell) and Judy Knudsen Brown (E-Minnesota) enjoy Nancy's surprise retirement party hosted by the Foundation Board of Directors in Evanston, Ill.

Best idea?

Our *Young Alumnae* newsletter. It's helped our youngest members become Foundation supporters.

How do you deal with the ups and downs of fundraising and management?

I'm a very positive person. But I'm a realist, too ... know the problem and deal with it. Accept and move on without rancor. Make things better. Try new ideas. Never say never. Laugh a lot.

What have you learned?

The Foundation is such a worthwhile organization. I'm really interested in its programs: developing young women's skills, helping women in crisis, recognizing scholarship and raising awareness about the No. 1 killer of women, heart disease.

The Fraternity is doing vital work. I believe that women need to develop self-confidence at an early age. What better way than through the excellent Alpha Phi officer training and member development programs offered in a supportive environment?

My Alpha Phi connection is for life. Everywhere I travel, I'm greeted as a sister. I count the people I've met and worked with among my good friends. I'll always keep in touch with them.

Our flower says, "Remember me ... " Please do. I'll certainly never forget you all.

"With her direction revenues tripled, scholarships grew, new programs were added, publications updated. I would not have missed the ride with Nancy ... we've become such good friends,"

—Nancy Wittgen Burks DeVoe (ΓΙ-DePauw), former Foundation Chairman and former Fraternity IEB President

In the Next Issue:
Meet new Foundation Executive Director Rebecca Andrew Zanatta (BP^–Washington State).





In Memory of a Sept. 11 Victim

I wanted to bring to your attention another victim of the Sept. 11 attacks. Cora Hidalgo Holland, mother of **Stephanie Holland-Brodney** (ΘK-Rochester), was a passenger on American Airlines Flight 11. Stephanie and her brother were on CNN for "Larry King Live" to talk about Cora and that September day. Many of Stephanie's Alpha Phi friends remember Cora fondly.

I'd like to share something that **Louise Aibel Litt** (ΘK-Rochester) wrote for a newsletter we produce for Theta Kappa members:

"I had the privilege and pleasure of being a bridesmaid in Stephanie and Vic's wedding in July 1994. It was so exciting to be a part of the event, and we all arrived days before the wedding to fit in all of the important pre-nuptial activities. The Hollands were incredibly hospitable to the fun-loving bridesmaid group throughout the extended weekend; I know we were quite a handful. From the moment I entered her home, Stephanie's mother was lovingly relentless in the way she continually offered a changing array and never-ending stream of food and beverages. This began when I set foot in the house and really did not let up. Despite all of the demands on the mother of the bride the weekend of her daughter's wedding, Cora Holland made the other bridesmaids and me feel like one of her daughters."

"Cora Holland had a gift – a gift of warmth – that was apparent to me instantly and made quite an impression. It was a long time before I saw that kind of warmth again, but I know exactly when I saw it. If any of you had the chance to see Stephanie with her beautiful children, Drew and Amelia, then you too have seen the sparkle of Cora Holland."

The weekend before [her death], a group of us got together in Massachusetts to celebrate 10 years of being Alpha Phis. Who would have known how events would change so quickly? Ironically, that reunion gave Cora Holland a chance to spend quality time watching her two grandchildren. You will be proud to know how much support our group of Alpha Phis have shown."

I did not know Cora Holland personally and I wish I had the opportunity. But from what I have read and learned from her friends (and knowing how Stephanie is), I know she was a remarkable woman. Survivors are Cora's husband, Stephen, her three children (Stephanie Holland-Brodney, Jessica Holland and Nate Holland), and two grandchildren (Drew and Amelia).

I traditionally send whatever is left [from local newsletter funds] to Alpha Phi on behalf of the chapter's newsletter subscribers. This year, I chose to produce the last issue for free, match the remaining funds and send a check to the Alpha Phi Foundation on behalf of 2001 subscribers in memory of Cora Hidalgo Holland.

Yours in Alpha Phi,

–Zita J. Sidas (ΘK-Rochester)

More for This Interested in Travel

It is always a pleasure to read the Alpha Phi *Quarterly* issues my daughter, **Caryn Schultz** (ZA-Eastern Illinois), shares with me. Because of my background as a travel instructor, I was especially interested in the Spring 2002 article entitled, "Interested in a Travel Career?" This article included good advice about the possibilities of a travel career.

I thought I would share a couple of other Web sites that might be of benefit to the Fraternity:

www.ISTTE.org The International Society of Travel & Tourism Educators site not only has good information, but also a list of reputable travel schools.

www.ICTA.com The Institute of Certified Travel Agents site has a lot of good tips and a list of travel schools as well.

If I can help anyone who is thinking about a career change, please have them contact me at: pschultz@northwesternbc.edu. Thanks again for sharing, and I hope these sites can help people who are making some major decisions.

Sincerely,

Patricia Schultz, CTC

Assistant Professor, Travel & Hospitality
Department

Northwestern Business College

ETA KAPPAS TO REUNITE IN SAN FRANCISCO

UC/Irvine (HK) chapter is holding a reunion for sisters from the founding class through the Epsilon class in San Francisco July 12-14, 2002. Activities include a main event at Gordon Biersch on the Embarcadero and a Sports Day in Golden Gate Park. For more information, e-mail Sara "Sperls" Sperling (HK-UC/Irvine) at ssperling@scu.edu.



Epsilon Alpha Plans 35-Year Reunion Dinner

Friday, Oct. 11, 2002
Ashland University Homecoming Weekend
Cost is \$25
Contact Ann Beckert Schar for details at 800.338.1121 or annie@anniesamishbaskets.com.

Calling Alpha Phis in Sports

Are you a college-level, Olympic or professional athlete? Do you work in a sports-related field? The *Quarterly* wants to hear from you! Send details to quarterly@alphaphi.org or Alpha Phi *Quarterly*, 1930 Sherman Ave., Evanston, IL 60201. Please include your e-mail address and/or telephone number.



Attention Professional Photographers and Photo Students!

Let Alpha Phi help build your portfolio! The *Quarterly* seeks volunteer photographers from all regions for small photo assignments. Contribute your talent! Contact the *Quarterly* staff at 847.316.8920 or quarterly@alphaphi.org for more information.



Quarterly Internships Available

Want to be the next Christie Hefner or Jacqueline Kennedy Onassis? Start by interning with the Alpha Phi *Quarterly*. Collegians interested or majoring in journalism, English, communications or marketing are encouraged to apply. Schedule negotiable. Position works out of Executive Office in Evanston, Ill. Contact quarterly@alphaphi.org or call 847.316.8920 for more information.



Planning a Reunion?

Tell the Alpha Phi *Quarterly* all about it. Send details including chapter or group name, year celebrating and date of celebration, to Alpha Phi *Quarterly*, 1930 Sherman Ave., Evanston, IL 60201. Or e-mail quarterly@alphaphi.org.

Attention Quarterly Reporters!

If you are responsible for gathering your collegiate or alumnae chapter's report for publication in the *Quarterly*, please note the following deadlines. Materials received after these deadlines will be considered for the following issue.

Issue	Copy Deadline
Fall 2002	July 15, 2002
Winter 2003	Oct. 15, 2002
Spring 2003	Jan. 15, 2003
Summer 2003	April 15, 2003

Volunteer Writers Needed

Did you miss the Career Development article in this issue? In order to bring this important aspect back, please volunteer to write about one of the following topics:

- How women's career roles and choices have changed over the past years.
- Careers in sports and fitness
- Careers in investment/finance

New Online: Alpha Phi Marketplace

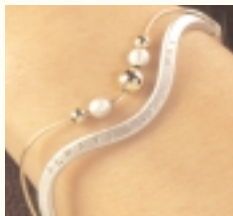
Available online at <https://www.alphaphi.org/marketplace>

In response to member request, Alpha Phi is proud to unveil custom-made quality jewelry and novelty items for sale via our new Web Marketplace. Visit us online to purchase these items designed exclusively for Alpha Phi.

JEWELRY

Alpha Phi Hand-Designed Bracelet

Retail Price: \$108.00



This hand-crafted sterling silver two-tone bracelet features three 14K gold-filled balls gliding gracefully along a 14K gold wire. It is inscribed "Always Alpha Phi."

Each piece is crafted individually by hand, adding to its comfort and versatility, matching wonderfully to either gold or silver jewelry.

The Alpha Phi Twisting Ivy Leaf Bracelet/Necklace

Retail Price: \$499.00/\$1,100.00



These elegant works of art are hand-crafted and hand-detailed from the finest materials by expert jewelers. Gently curving stemmed ivy leaves twist to form a continuous 7.5 inch long bracelet or 16 inch necklace.



The leaves are cast in solid 14K gold. The bracelet and necklace can be made in all yellow gold, all white gold or alternating yellow/white gold.

Also available with pave diamond white gold links interspersed into the design.

The Alpha Phi Cultured Freshwater Pearl Necklace

Retail Price: \$125.00



This smooth, center drilled, cultured freshwater pearl necklace is suitable to adorn your neck for daytime casual or dressy nights on the town. A gold-filled custom-made Alpha Phi logo charm dangles near the 14K gold

filigree clasp. Necklace is 18 inches in length.

The Alpha Phi Ivy Leaf Diamond Necklace with Engraved Backing

Retail Price: \$450.00



This 14K gold ivy leaf pendant is cast for a three-dimensional, sculptural look. To emphasize the silhouette of the ivy leaf, a flat rim of polished gold outlines the satin finished, puffed center.

The heavily-domed center is sprinkled with three full-cut diamonds that weigh approximately 0.08 ctw. The back is finished with a custom-pierced 14K gold Alpha Phi gallery. The pendant is suspended from an 18-inch 14K gold rope chain.

ALPHA PHI CREED SCARVES

Retail Price: \$175.00



These luxurious hand-dyed and hand-stamped velvet scarves display the Alpha Phi creed artistically burnt into the velvet. The scarves are acrylic/rayon blend, double thick. Available in black, silver, gold and purple.

ALPHA PHI NOVELTY ITEMS

Alpha Phi Hip-Pocket Case / Mirror Compacts / Pill Boxes

Retail Price: \$36.00 / \$32.00 / \$24.00



Carry all your most important items in conveniently sized Alpha Phi compacts. Perfect for the woman on the go. Fit credit cards, business cards, money, etc. in your evening bag with the stylish hip-pocket case. Check your reflection discreetly and easily with a silvertone mirror compact. The pill box is perfect for vitamins, medicine, jewelry and any small item you want to keep safe and easily accessible.

The lacquer laminated steel hip pockets, mirror compacts and pill boxes boast the Fraternity's logo and tagline: *Timeless Tradition. Contemporary Vision. Always Alpha Phi.* Available in pewter or blue, the case is prefinished, so no polishing is required.

Order these fabulous items online at <https://www.alphaphi.org/marketplace>

POSTMASTER: Please send changes to Alpha Phi, 1930 Sherman Ave., Evanston, IL 60201